

## Project funding signage DJ SIR and Bendigo Bank



## Boat Club Exterior Prior to Works



**Boat Club Exterior Prior to Works (2)**



**Excavation to extend south car park and access road**



**Bar and Dining Area During Strip-out**



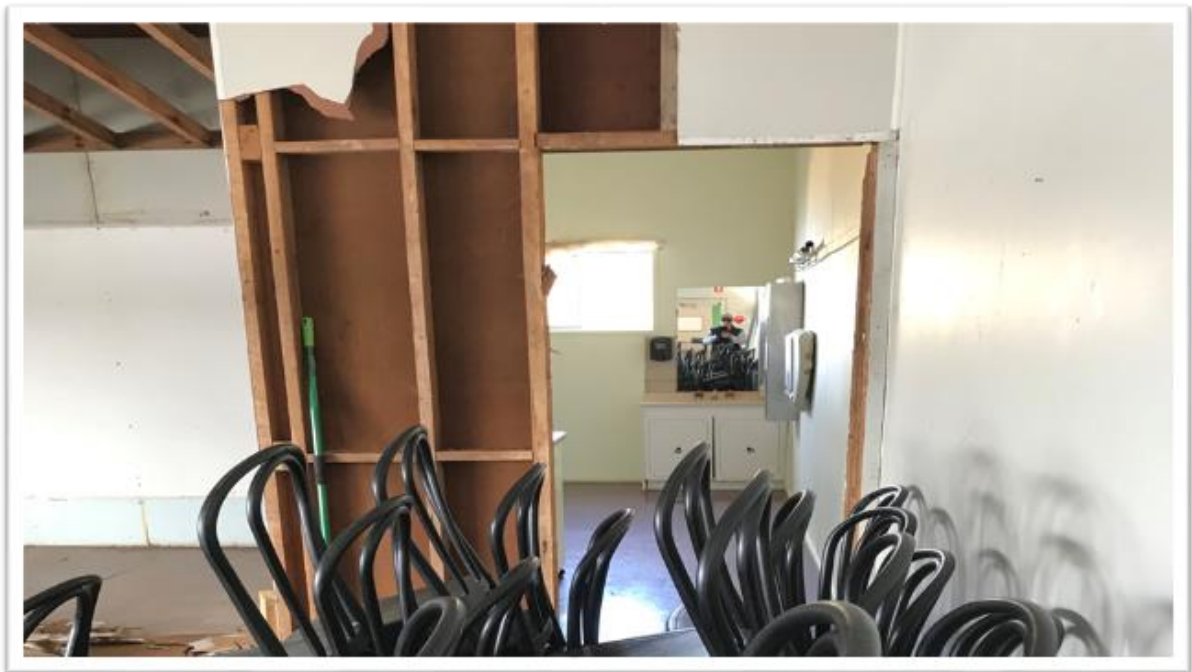
**New Distribution Board with 3 phase supply**



**Bar Staff Service Area**



**Toilets and Dining Area 1<sup>st</sup> floor**



## Dining and Stage area strip-out 1<sup>st</sup> Floor

